

CABINET REPORT – 30TH JUNE 2020
AFFORDABLE HOUSING DEVELOPMENTS – SUTTON IN ASHFIELD
Additional Information

SITE 1 - STONEY STREET CAR PARK

Located on the outskirts of the town centre, off Outram Street



Car park with existing residential provision on 3 sides.

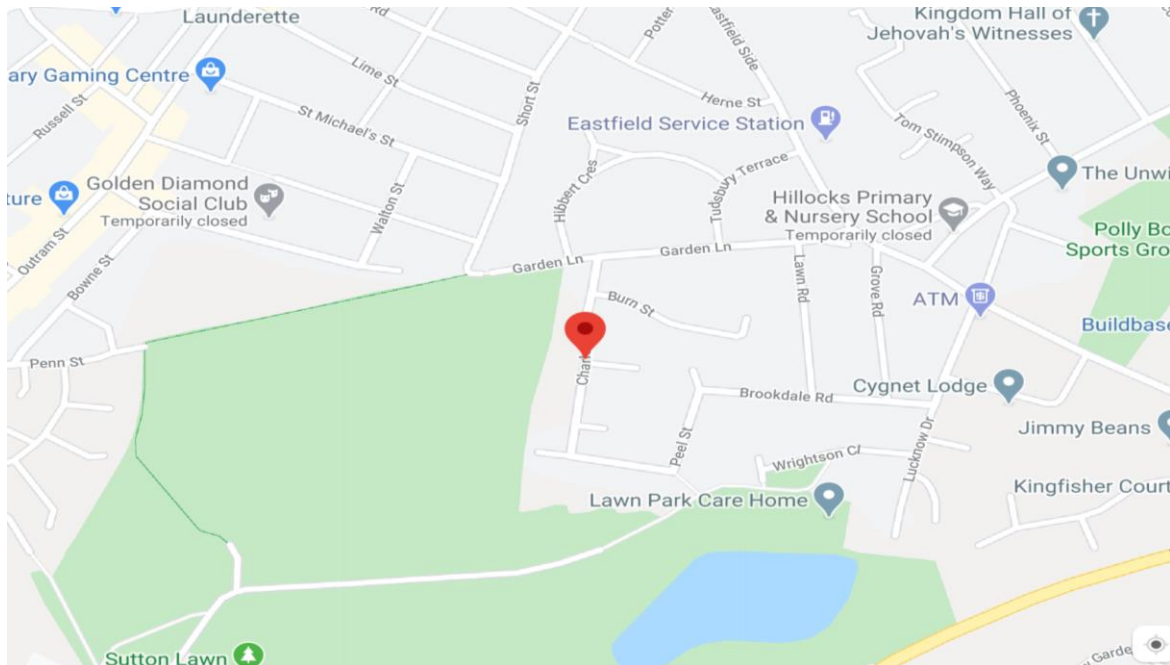


Potential designs:



SITE 2 - POPLARS COMMUNITY CENTRE

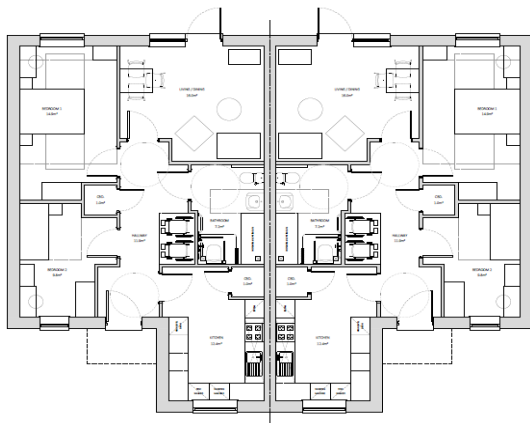
Located off Charles Street, within an established residential area.



Existing community centre building



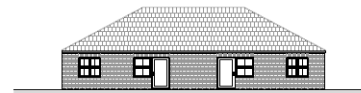
Potential plans:



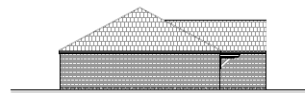
GROUND FLOOR PLAN
1:200



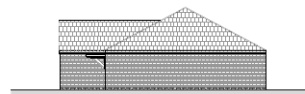
FRONT ELEVATION
1:200



REAR ELEVATION
1:200



SIDE ELEVATION
1:200



SIDE ELEVATION
1:200

SITE 3 - BEECHES COMMUNITY CENTRE

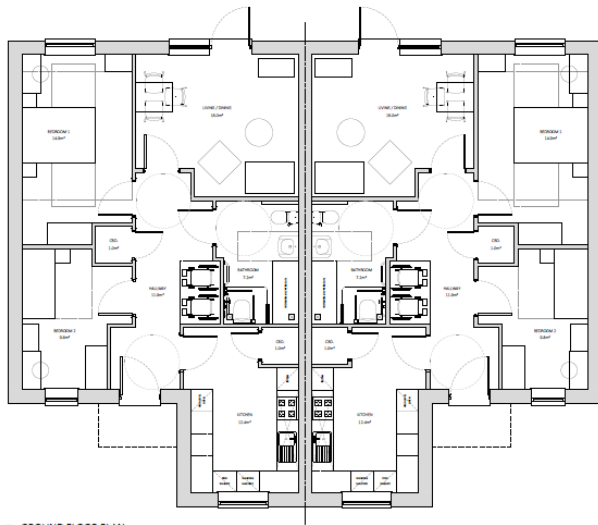
Located in an established residential area off The Beeches, Skegby



Existing community centre building



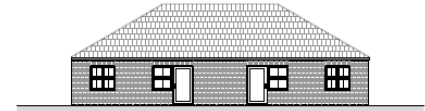
Potential plans:



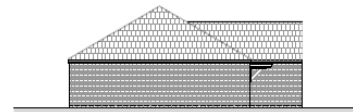
GROUND FLOOR PLAN
1:500



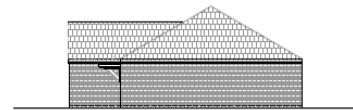
FRONT ELEVATION
1:500



REAR ELEVATION
1:500



SIDE ELEVATION
1:500



SIDE ELEVATION
1:500